

# Insper

INFORMATION  
FOR PARTNERS

## Factsheet 2026







# International Experience Office



**Junior Menezes** | Head of International Experience

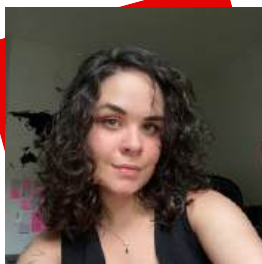
[juniorm@insper.edu.br](mailto:juniorm@insper.edu.br)

[linkedin.com/in/ajuniormenezes](https://www.linkedin.com/in/ajuniormenezes)

**Matheus Furtado** | Special Programs

[matheusmmf@insper.edu.br](mailto:matheusmmf@insper.edu.br)

[linkedin.com/in/matheusmoraismf](https://www.linkedin.com/in/matheusmoraismf)



**Dhara Tavore** | Outgoing

[dharaavtm@insper.edu.br](mailto:dharaavtm@insper.edu.br)

[linkedin.com/in/dhara-tavore](https://www.linkedin.com/in/dhara-tavore)

**Kamila Barbosa** | Incoming

[kamilabs@insper.edu.br](mailto:kamilabs@insper.edu.br)

[linkedin.com/in/kamilabs](https://www.linkedin.com/in/kamilabs)



**Juliana Garcia Borges** | Summer & Winter Programs

[julianagb1@insper.edu.br](mailto:julianagb1@insper.edu.br)

[linkedin.com/in/juliana-garcia](https://www.linkedin.com/in/juliana-garcia)

**Main contact:**

[international@insper.edu.br](mailto:international@insper.edu.br)

# Insper

## Where Innovation Meets Impact

At Insper, education goes beyond textbooks and lectures - it is about transforming lives and shaping the future. As a private non-profit, world-class higher education and research institution, we reinvest all resources into our mission:



**Empowering innovative leaders;**



**Advancing applied knowledge;**



**Driving positive change in Brazil and beyond.**

Insper stands among the world’s leading institutions, recognized for its academic excellence and international accreditations. We are proud to hold the Triple Crown Accreditation (**AACSB**, **EQUIS**, and **AMBA**) - a distinction held by less than 1% of business schools worldwide. Additionally, our engineering programs are accredited by **ABET**, reinforcing our commitment to high-quality education in applied sciences and technology.

Here, students do not just acquire knowledge; they engage in critical thinking, solve complex real-world problems, and collaborate with some of the brightest minds. Our graduates pursue careers in the private, public, and nonprofit sectors, equipped to lead and create meaningful impact.

With strong faculty engagement and a focus on leadership development, Insper provides students with the tools to navigate complexity and act with integrity in an ever-evolving world. By integrating knowledge from multiple disciplines, we prepare professionals to make a lasting impact in a globalized society.

Education at Insper is not just about acquiring a degree; it is about developing the skills, mindset, and network to drive transformation.



## Degree Programs

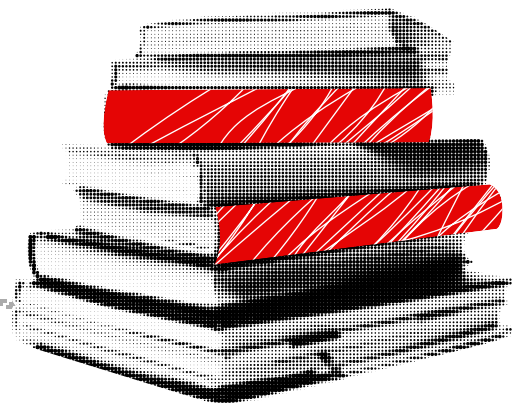
Offered in English at Insper

### UNDERGRADUATE ELECTIVES IN

- BUSINESS ADMINISTRATION
- ECONOMICS
- COMPUTER ENGINEERING
- MECHANICAL ENGINEERING
- MECHATRONIC ENGINEERING
- COMPUTER SCIENCE
- LAW

### PH.D

- IN BUSINESS AND ECONOMICS



## Degree Programs

Offered in Portuguese at Insper

### PROFESSIONAL MASTER'S (MSC.) PROGRAMS

- BUSINESS ADMINISTRATION
- ECONOMICS
- PUBLIC POLICY

### EXECUTIVE EDUCATION

Open enrollment, customized and online programs available.

### EXECUTIVE MBA

Classes in Portuguese with short-term modules in English.





### ADVANCED PROGRAMS

- FINANCE
- DATA SCIENCE & DECISION
- PUBLIC MANAGEMENT
- CONTROL & ACCOUNTING
- SOCIAL URBANISM.

# Academic Calendar

## At Insper

In Brazil, the academic year officially starts in January and ends in December. The seasons in the Southern Hemisphere are opposite to those in the Northern Hemisphere. However, the courses we offer in English follow the academic calendar below:

<p><b>FIRST SEMESTER</b> From January to mid-June</p> 	<p><b>WINTER BREAK</b> From mid-June to July</p> 
<p><b>SECOND SEMESTER</b> From July to December</p> 	<p><b>SUMMER BREAK</b> From mid-December to mid-January</p> 

## Key Dates

### For the Fall Semester 2026

- ✓ **Nomination deadline:** March 31<sup>st</sup>, 2026
- ✓ **Application deadline:** April 1<sup>st</sup> to 10<sup>th</sup>, 2026
- ✓ **Welcome Week:** August 3<sup>rd</sup> to 7<sup>th</sup>, 2026
- ✓ **Beginning of classes:** August 10<sup>th</sup>, 2026

### For the Spring Semester 2027

- ✓ **Nomination deadline:** September 31<sup>st</sup>, 2026
- ✓ **Application deadline:** October 1<sup>st</sup> to 9<sup>th</sup>, 2026
- ✓ **Welcome Week:** To be confirmed
- ✓ **Beginning of classes:** To be confirmed



The provided dates are tentative and may be adjusted as needed. If any changes occur, partner institutions will be duly notified.

# Application Procedures

For a academic term at Insper

Nominated students will receive detailed information about Insper, the application process, required documents, accommodation options, and life in São Paulo after their home institution submits their nomination.

## Required Documents for Enrollment at Insper:



**ID Photo:** A clear photo of the student's face (a simple selfie is acceptable) for registration purposes;



**Photo of a Hobby:** A creative photo showing the student engaging in an activity they enjoy or one that represents them;



**Passport Copy:** A clear and legible copy of the student's passport;



**Transcript of Records:** An official copy issued by the student's home university.

## Important Guidelines:

- All documents must be of high quality and submitted in JPG, PNG, or PDF formats (HEIC format will not be accepted);
- Students must ensure that all requested documents are submitted, as they are required to formalize their enrollment at Insper. Failure to provide them may delay the start of the visa process;
- Students must be nominated through an online form available [here](#).

# Visa and Immigration

All international exchange or visiting students must obtain a student visa (VITEM IV) before arriving in Brazil. The visa must be requested at the Brazilian Embassy or Consulate in the student's home country after receiving the Letter of Acceptance from Insper. You can find a list of Brazilian embassies and consulates worldwide [here](#).

A tourist visa is not valid for studying in Brazil and cannot be converted into a student visa once the student has left their country of origin. Students who do not hold a valid student visa will not be able to enroll at Insper.

Visa processing times may vary depending on the consulate, so we strongly advise students to start their application as soon as they receive the necessary documents.

Additionally, some consulates may require that the student's passport be valid for at least six months beyond the end of the study period at Insper. For more information, please visit the official website of the Brazilian Ministry of Foreign Affairs [here](#).

---

**Important**

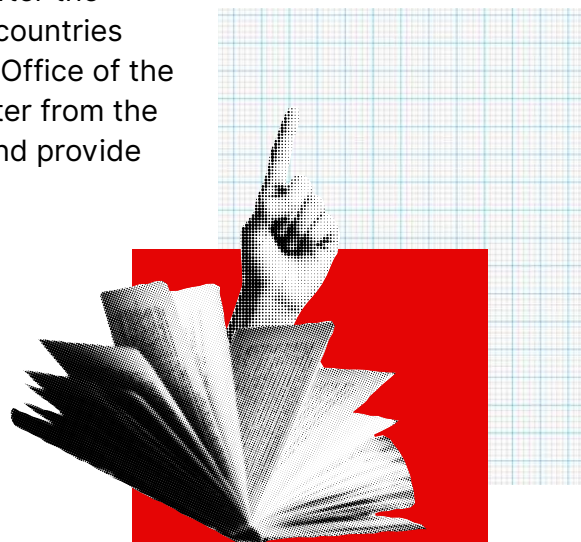
We will send the acceptance letter via email two weeks after the application deadline. A physical copy will only be sent to countries that require it, and it will be delivered to the International Office of the home university. If the student is unable to collect the letter from the International Office, they must notify Insper in advance and provide an alternative address for delivery.

## Academic Information

### Language Requirements

Students do not need to speak Portuguese to study at Insper. Each semester, we offer 25 to 35 courses taught in English.

Courses are available in English or Portuguese. While Insper recommends that exchange students have **at least a CEFR B2 level of English**, we do not require proof of proficiency. However, classes are academically demanding, and students are expected to participate actively in discussions, projects, and assessments, as participation is a key component of the final grade.



If students wish to take courses in Portuguese, they must provide proof of proficiency. This can be a letter from their home university confirming their ability to attend classes in Portuguese.



**Courses and Registration**

The list of courses offered in English may vary each semester, as they are part of the 4th year of the undergraduate program. Course availability is limited, and registration follows on a first-come, first-served basis. Students must have their course selection validated by their home university by early June for the Fall semester and by the end of November for the Spring semester.

The updated course list for the upcoming semester will be available by the end of October (for the first semester) and April (for the second semester). However, you can check courses from previous semesters as a reference for what is typically offered. Click [here](#) to access the most updated course offer.

**Grading System - Undergraduate Program**

Grading Scale: 0 - 10, with 5 as the minimum passing grade:

Group	Scale	Description of the grading system
<p><b>Approved</b></p> 	9-10	Excellent
	8-8.9	Very good
	7-7.9	Good
	6-6.9	Satisfactory
	5-5.9	Sufficient
<p><b>Not approved</b></p> 	3.1-4.9	Fail
	0-3	Fail

## **Conversion of Inspere Courses to ECTS**

Inspere does not use the ECTS credit system. Our courses have a workload of either 40 or 80 class hours, which include classroom activities, exams, tutorials, and office hours. These courses are part of the regular undergraduate curriculum, which typically lasts four to five years.

Most courses available for exchange students have 40 class hours, with a few options of 80 class hours. Below is the recommended ECTS equivalence:

**40** CLASS-HOUR COURSES:



**One class per week;  
Total workload: 125 to 150 hours;  
Recommended equivalence: 5 ECTS.**

**80** CLASS-HOUR COURSES:



**Two classes per week;  
Total workload: 250 to 300 hours;  
Recommended equivalence: 10 ECTS.**

To be registered as an exchange student at Inspere, students must enroll in at least 25 ECTS. This typically means taking five 40-hour courses or a combination including 80-hour courses. We do not recommend enrolling in more than eight 40-hour courses per semester.

## **Welcome Week**

### **For Exchange Students**

Welcome Week at Inspere is an essential and exciting part of the exchange experience. It is designed to help students integrate into the academic and social environment.



Throughout the week, participants will explore the campus, receive important information about course registration, and engage in interactive activities alongside local and international students. It is also an opportunity to immerse themselves in Brazilian culture and get acquainted with life in São Paulo.

Participation in Welcome Week is mandatory, and students must arrive before it begins. Arriving early allows for a smoother transition, providing time to adjust to the city and complete any remaining registration procedures before classes start.

Inspere looks forward to welcoming its exchange students to an unforgettable experience!

## **Inspere Buddy Program**

At Inspere, we offer the Inspere Buddy Program. Buddies help facilitate connections with local students both on and off campus, offering opportunities to immerse themselves in Brazilian culture, enjoy meaningful experiences, and build lasting friendships.



**Inspere  
Buddies**



## Student Life

Insper provides a comprehensive support system, available in English, to help students adapt to university life, build interpersonal relationships, explore personal interests, and overcome challenges in a healthy way. The goal is to foster balanced, resilient individuals who thrive both professionally and as engaged citizens.



### WELL-BEING

The Well-Being Center is dedicated to prioritizing students' mental health, well-being, and social integration. Through active and personalized support, the center helps ensure a smooth transition into university life and fosters an inclusive and supportive environment. It is also committed to guaranteeing equitable learning opportunities by providing specialized support and the necessary accommodations for students with specific needs, thus promoting a diverse and inclusive academic experience.



### CAREER CENTER

A hub for career guidance and professional development, connecting students and alumni with employers, networking events, career fairs, and workshops to enhance their career paths, from internships to career transitions.



**ETHICS & ENGAGEMENT**

It is the department responsible for promoting student engagement and fostering a sense of belonging among Undergraduate, Graduate, and Executive Education students, through initiatives that strengthen their experience beyond the classroom. The Ethics & Engagement department oversees student experience management, mapping institutional touchpoints, and recommending continuous improvements. Furthermore, it is accountable for monitoring Student Life indicators, assessing the impact of initiatives on student development, and conducting Disciplinary Procedures, ensuring full compliance with Inspers’s Code of Ethics and Conduct.



**STUDENT SERVICES**

The Student Services department is dedicated to supporting students throughout their academic journey at Inspers. It serves as the primary point of contact for a wide range of enquiries and needs, offering guidance and assistance on different aspects of student life. By providing personalised support and clear information, Student Services helps ensure that students can navigate their academic experience with confidence, access the resources available to them, and make the most of their time at the institution.

## Facilities

Insper has a modern and innovative campus with three buildings, offering fully equipped infrastructure for students. Facilities include classrooms, auditoriums, restaurants, coffee shops, a parking lot, Wi-Fi access, a Student Lounge, labs, sports facilities, and more.



### **Telles Library**

Claudio Haddad Building,  
ground floor



### **Insper Slide**

Quata 200 Building, 2nd floor



### **'Amphitheater' Classroom**

Claudio Haddad Building, 2nd floor

## Accommodation

Insper is a city-campus and does not provide on-campus housing, but students can explore various accommodation options through the resources below:



### Uliving

options available in Jardins and Paulista;



### 4Student



### Kasa

Located near Insper, offering excellent services in a vibrant area with a strong international and local student community;



### Housi



### Share Student Living



# Life in São Paulo

## For Exchange Students

São Paulo is Brazil's largest and most vibrant city. It offers a diverse cultural scene, top universities, and a dynamic student life. Home to museums, theaters, and a world-class food scene, the city blends tradition with innovation.

Students enjoy lively neighborhoods like Vila Olímpia, Jardins, and Vila Madalena, known for their cafés, coworking spaces, and nightlife. Public transport and ride-hailing services make getting around easy.

Whether exploring Ipiranga Museum, relaxing in Ibirapuera Park, or experiencing São Paulo's rich cultural mix, international students will find an exciting and welcoming environment to study and live!



**Ipiranga Museum**



**Ibirapuera  
Park**



**Paulista  
Avenue**

## **Cost of Living**

### **In São Paulo**

São Paulo is the largest city in South America, with a metropolitan area of over 21 million inhabitants. The official currency in Brazil is the Brazilian Real (R\$).

Opening a bank account as a foreigner in Brazil can be a lengthy process, so we recommend that students rely on alternative financial options during their stay:

- Prepaid Travel Cards (such as WISE or Revolut – highly recommended);
- Credit Cards;
- Cash (currency exchange offices are easy to find).

<b>Living expenses (per month)</b>	<b>R\$ (Brazilian Reais)</b>	<b>US\$</b>	<b>€</b>
Housing – double room (from R\$2500 to R\$3500)	R\$3,500	US\$640.50	€551.35
Food	R\$1.400	US\$256.20	€220.50
Public Transportation** (R\$5,00 bus, R\$5,20 subway and train ticket)	R\$550	US\$100.65	€86.63
Personal Expenses***	R\$1,100	US\$201.30	€173.25
<b>Total</b>	<b>R\$6,550</b>	<b>US\$1,198.65</b>	<b>€1,031.63</b>

\*Shared double room = accommodation shared by two students (total cost for the room/unit).

\*\* Includes groceries + some meals out.

\*\*\* Based on official São Paulo transport fares as of Aug/2025.

\*\*\*\* Estimated for basic daily needs.

\*\*\*\*\* Exchange rate for August 2025. Prices may vary, as currency fluctuation is frequent.





**Main contact:**  
[international@insper.edu.br](mailto:international@insper.edu.br)

**Location:**  
Rua Quatá 300, Vila Olímpia  
04546-042, São Paulo – SP,  
Brazil

# Insper