



國立陽明交通大學

NATIONAL YANG MING CHIAO TUNG UNIVERSITY



**Exchange Program Guideline**

Office of International Affairs





## Contact Information

### Outbound Exchange Program (NYCU students to your university)

- Ms. Amber Li
- [ex-out@nycu.edu.tw](mailto:ex-out@nycu.edu.tw)

### Inbound Exchange Program (Students from your university to NYCU)

- Ms. Shirlin Lim
- [ex-in@nycu.edu.tw](mailto:ex-in@nycu.edu.tw)

### Inbound Exchange Student Services

- Ms. Iris Chuang (Chiaotung Campus)
- [irischuang@nycu.edu.tw](mailto:irischuang@nycu.edu.tw)
- Ms. Meggy Niu (Yangming Campus)
- [meggyniu@nycu.edu.tw](mailto:meggyniu@nycu.edu.tw)





**National Yang Ming Chiao Tung University** was created in 2021 through the merger of two universities:

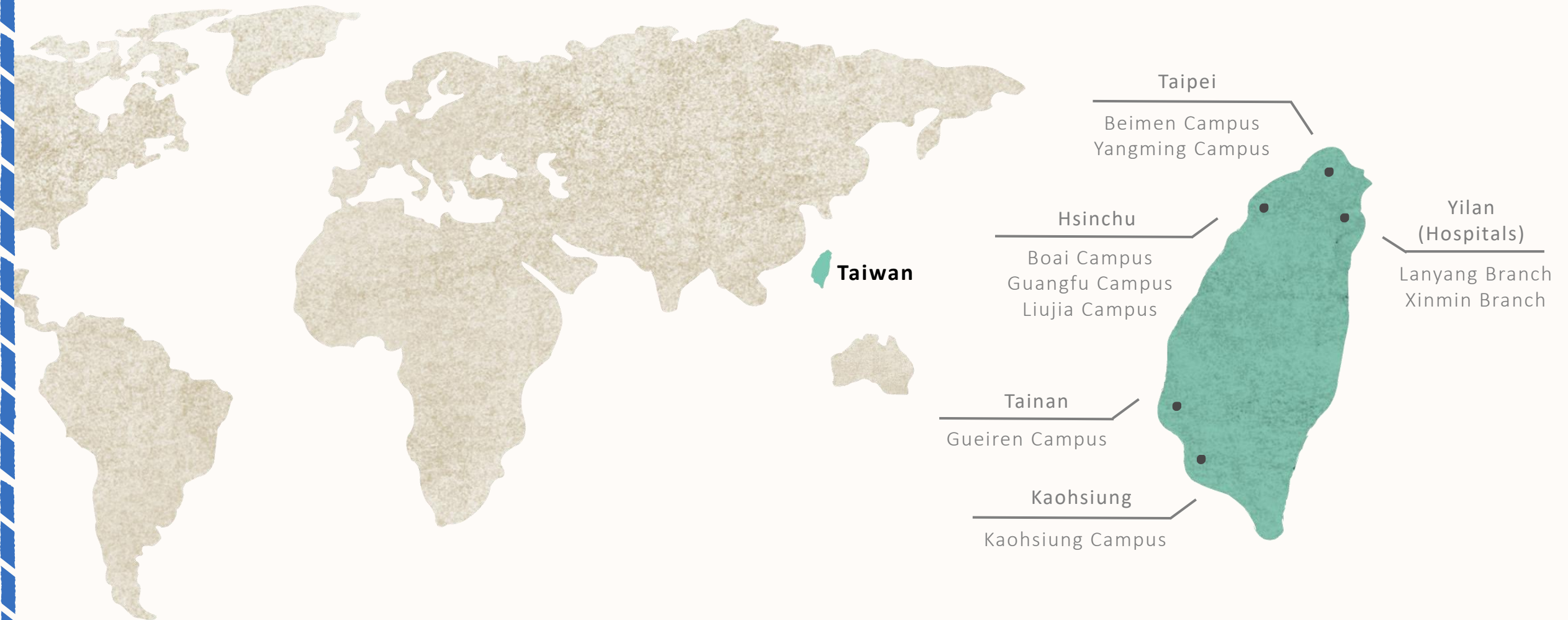
National Yang-Ming University and National Chiao Tung University.

Yang Ming, which focused on biomedical research, and Chiao Tung, which focused on electronic communication research, were both top-tier universities in Taiwan. At present, there are 19 colleges and 74 university/college-level research centers. In addition to implementing effective integration and innovation under the conventional organizational structure of regular teaching, research, administration, and student affairs, NYCU is singularly unique as it will establish Taiwan's most innovative smart medical research. NYCU will combine the strengths of Yang Ming and Chiao Tung to jointly develop medical applications in terms of AI, telemedicine, medical robots, Internet of Things, wearable devices, and block-chain biomedical as Eco-system amongst other developments.





# Campus Map



# NYCU at a Glance

Key Figures and Rankings

Students      8,771 Undergraduates  
**22,117**      13,346 Graduates

QS Asia University Ranking **#42**

THE Impact Ranking **#41**

THE Asia University Ranking **#72**

## QS Top University Ranking #199

(Subject Ranking in Taiwan)

**#1 Data Science and Artificial Intelligence**

**#3 Computer Science & Information Systems**

**#3 Statistics & Operational Research**

**#3 Medicine**

**#3 Mathematics**

Updated: Oct. 2025

# 19 Colleges

- Guangfu Campus
- Yangming Campus
- Other Campuses

Computer Science	Artificial Intelligence (Gueiren Campus)	Engineering Bioscience
Electrical & Computer Engineering	Biological Science & Technology (Boai Campus)	Dentistry
Engineering	Hakka Studies (Liujia Campus)	Life Sciences
International Semiconductor Technology	Management (Guangfu & Beimen Campus)	Medicine
Law	Photonics (Gueiren Campus)	Nursing
Science	Humanities, Arts, and Social Sciences (Guangfu & Yangming Campus)	Pharmaceutical Sciences
Industry Academia Innovation School		







# Introduction



NYCU offers inbound international students an opportunity for academic and cultural immersion.

Types	Remarks	How to apply
Inbound Exchange Program	Students enrolled (or matriculated) at partner institutions and are nominated by their home institutions.	The nomination link will be emailed to the partner institutions' coordinator(s) in every nomination period. The link differs in each semester.
Inbound Visiting Program ( <b>self-funded</b> exchange)	Students enrolled at partner institutions but not officially nominated by their home institutions; or, students from non-partner institutions.	Students apply directly via the online application system in the application period.

## Important Dates

### Application timeline

Students may choose to exchange for one semester or one academic year.

\*Academic year at NYCU begins in September; full academic year exchange can only begin in Fall Semester.

Semester	Nomination Deadline	Application Deadline
Fall Semester (Sep. to Jan.)	March 30 <sup>th</sup>	April 15 <sup>th</sup>
Spring Semester (Feb. to Jun.)	September 30 <sup>th</sup>	October 16 <sup>th</sup>

\*The confirmed academic calendar will be announced in late June each year.

## NYCUCourse Timetable

<b>Instruction</b>	1.	Website: <a href="https://timetable.nycu.edu.tw/">https://timetable.nycu.edu.tw/</a>
	2.	Choose English in “Language”, and the system will switch to English version.
	3.	Choose “College” in “Search for Department” and search for the program under the college you choose.
	4.	Tick the box in front of “Other Search Parameters” and click on “English Medium Courses”.
	5.	The course list will be finalized two months before the start of each semester. Please look for the courses in the previous semesters during application period.





# NYCU Departmental Application Requirements

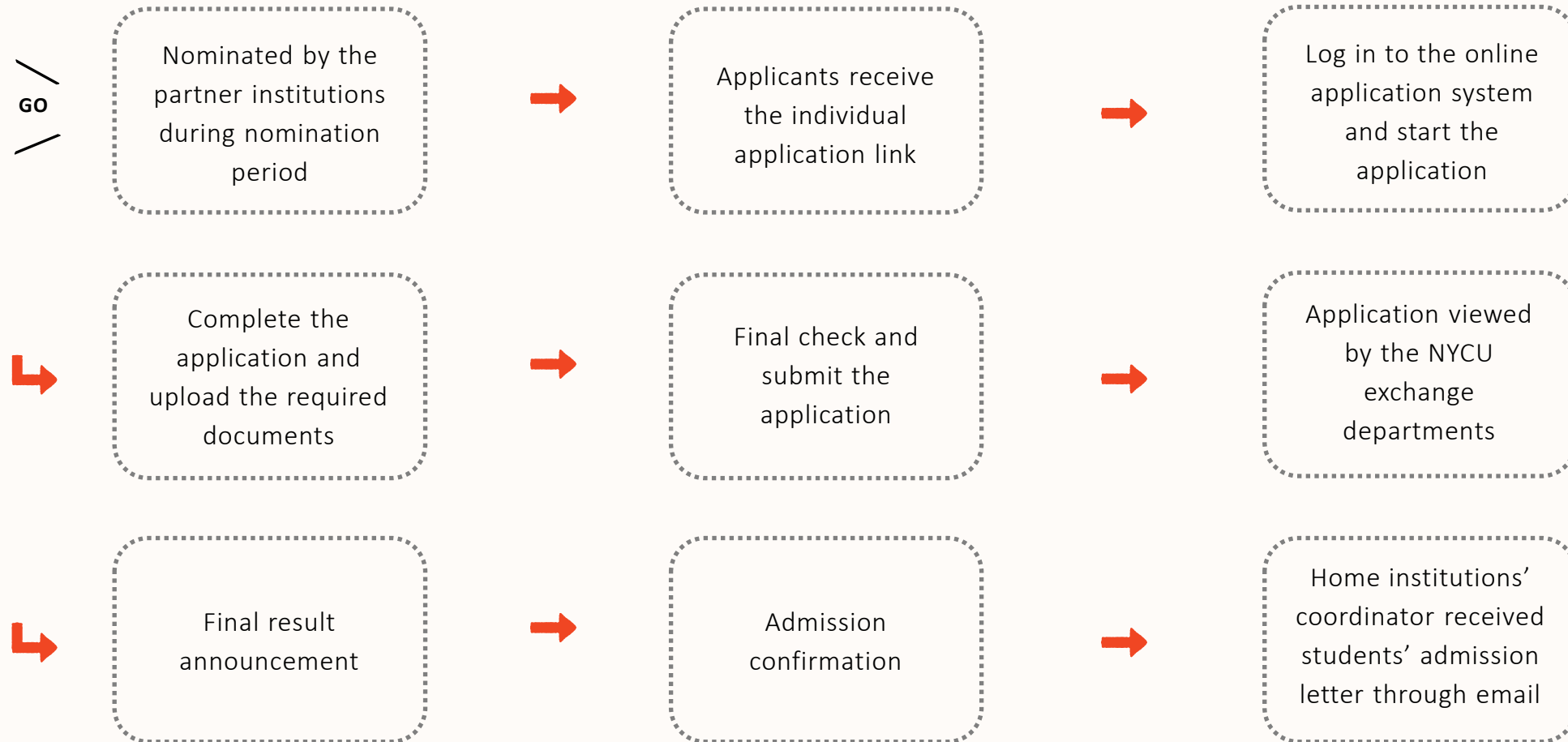


## [NYCU Available Departments for Inbound Exchange Program](#)

**\*\*Please read the requirements carefully before applying\*\***

1.	The department would review the applications and the supporting documents; each department reserves the right to reject or re-allocate applicants to appropriate departments.
2.	Minimum credit requirement (per semester) <b>Undergraduate: 9 credits; Graduate: at least 2 courses</b>
3.	<b>Students can choose courses across colleges and campuses (not limited to the enrolled department/college).</b> Please note that instructors reserve the authority to decline the students due to unfulfilled lecture prerequisites or limited teaching capacities.
4.	<b><u>College of Management</u></b> is limited to Final-year undergraduate students and graduate students.

# Application Procedures





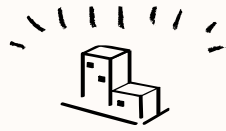
# Application Documents

## Required Documents

Please prepare all the documents and submit them to the online application system. The documents should **be PDF format and in English**.

NO.	Documents	Remarks
1	Application form	Both applicant and home institution' s coordinator have to sign the last page.
2	Curriculum vitae (CV)	Personal resume in English.
3	Study Plan	It may include your motivation and a tentative list of courses the student would like to take during the exchange period.
4	Official transcript	The academic records approved by the home institution and should be in English.
5	Official enrolment letter	The enrolment letter from the home institution or "valid" student card.
6	Passport (Information page)	It should have <b>at least 6 months of validity</b> .
7	Supporting document (optional)	E.g. proof of language proficiency (English waived for students from Anglophone countries or English-medium institutions), certificate of awards or competitions, etc.
8	Recommendation letter (optional)	The letter from the home institution' s coordinators or professors.





## University Facilities

- 24-hour self-study center & study room
- Prayer room
- Bookstore
- Dry cleaning service
- Hair salon & optician



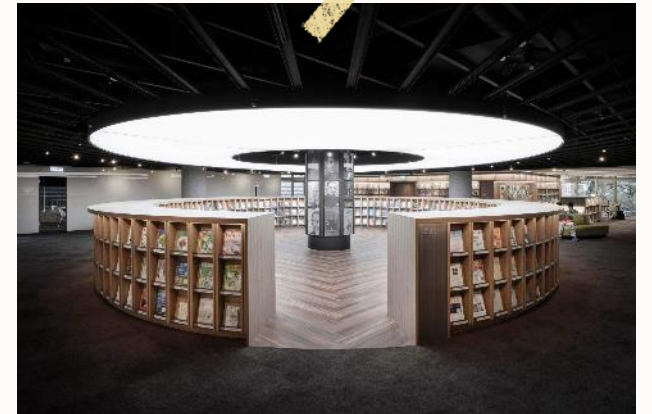
1 Swimming Pool (outdoor/ indoor)



2 Fitness Center



3 Dining Hall



4 Library





5 Library – Reading Area



6 Tennis Court



7 General Court



8 Basketball Court





**Division of Overseas Student Affairs** is part of the Office of International Affairs, and is established to offer on-site services, such as accommodation, insurance, visa, registration and other student needs. Furthermore, International student society, host-family arrangement, and international student emergency are taken care of by them as well.







## Orientation

The on-site orientation will be held before or at the beginning of each semester start. It introduces NYCU to new international students.



## Free Chinese Courses

- Chinese Cultural Salon: Cultural experience courses
- Courses range from introductory to advanced levels (4 levels)
- Elective courses focusing on useful situational conversations



Chinese Language Division,  
Language Teaching and Research Center



Please feel free to contact us for any inquiries.

